



THE 7-SEATER  
**ERTIGA**





# Everyone's Welcome

The all-new Ertiga is a stylish seven-seater with a powerful and responsive engine. It has space for the driver, six passengers, luggage, and all the enthusiasm you can muster. Whether you're driving the kids to school, taking the family on holiday, or transporting guests between hotels and airports, with the new Ertiga, you really can get **All In.**







# All in? Yes!

Setting off on holiday in the brand new Ertiga just got a whole lot better. With space for everyone, the kids can relax, luggage is sorted, and even the dog can come along.

**The new Ertiga also comes with all the features you need to enjoy the journey as much as you enjoy your vacation.**

## AERODYNAMIC STYLING

With its stylish aerodynamic shape, the Ertiga needs less energy to move forward, thereby using less fuel.

## SMART SIDE VIEW MIRRORS\*

Integrated indicators add to the Ertiga's stylish look and improved safety measures.

\*Available on GL models only

## CENTRAL LOCKING

Central locking allows you to lock and unlock the car in a jiffy – just make sure everyone's in before you do, especially if it's raining.

## ALLOY WHEELS

Stylish alloy wheels will make your Ertiga GL stand out whether it is at school or the airport.



## HANDY STORAGE SPACES

With lots of neat and useful storage compartments, you can keep everything you need at arm's length or tucked away just below the luggage area.

## ELECTRIC WINDOWS

Front and second row electric windows give every passenger smooth and easy operation.

## BACK STORAGE COMPARTMENT

Below the luggage area is a neat and useful storage compartment for those items you'd like to keep handy but not lying around.\*

\*Available on GL models only

## D-SHAPED STEERING WHEEL

The Ertiga comes with a D-shaped steering wheel that increases legroom and makes it easier to get in and out of the vehicle.

## HIGH QUALITY SEAT UPHOLSTERY

The seven-seater Ertiga comes with a modern and spacious black interior that complements its stylish look.

## 7" INFOTAINMENT SYSTEM WITH SMARTPHONE CONNECTIVITY AND REVERSE CAMERA\*\*

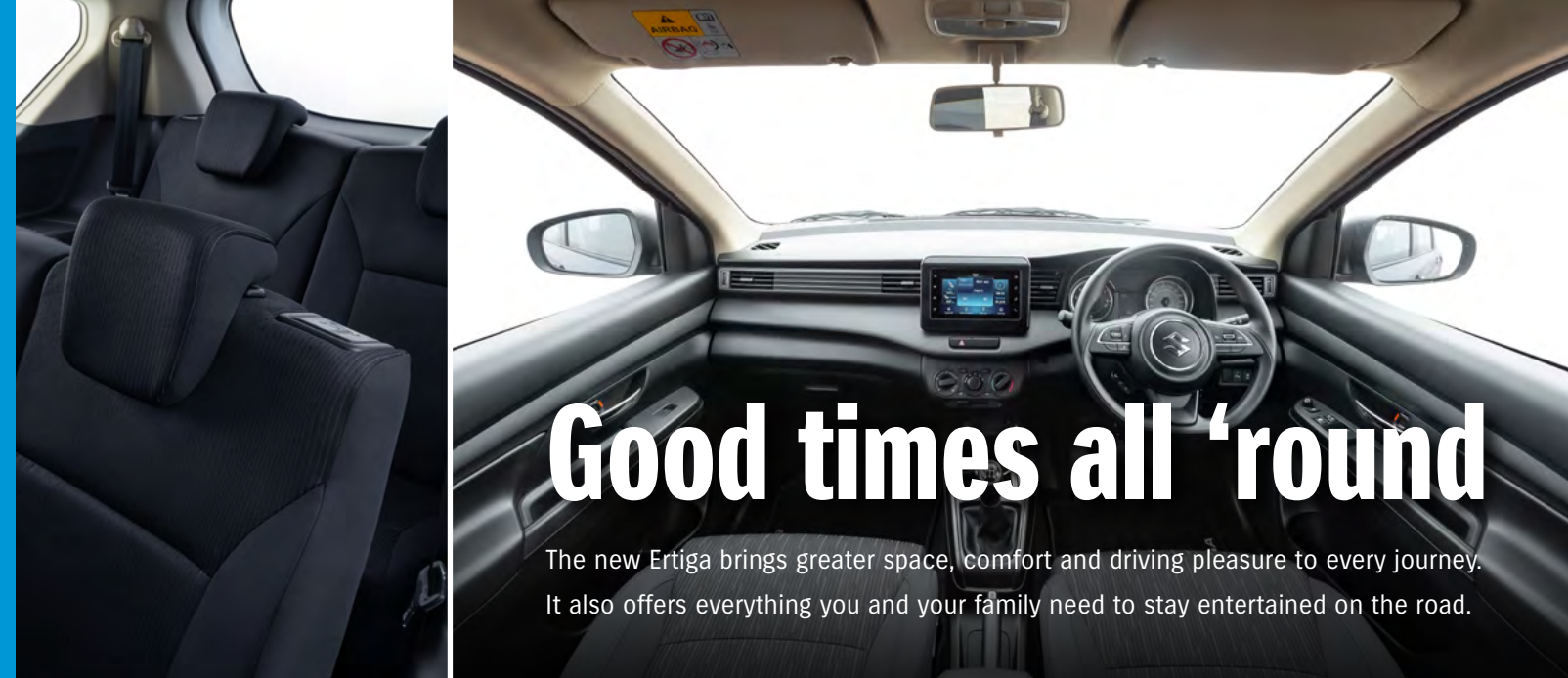
A 7-inch touchscreen display enables intuitive operation of multimedia features including audio, hands-free phone, reverse camera and smartphone integration. Features can be selected from the four main operating modes - Listen, Call, Drive and Connect.

The touchscreen system works with Apple CarPlay, Android Auto™ and Mirrorlink™.

By connecting your compatible iPhone via USB, Apple CarPlay allows you to make phone calls, access your music, send and receive messages, and get directions all by voice command or a tap on the audio display.

Android Auto puts Google Maps™, Google™ Search and other Google services at the driver's fingertips in a non-distracting way. Mirrorlink™ lets various applications on your smartphone appear on the vehicle's touchscreen display, allowing you to access your smartphone's features.

\*\*Available on GL models only

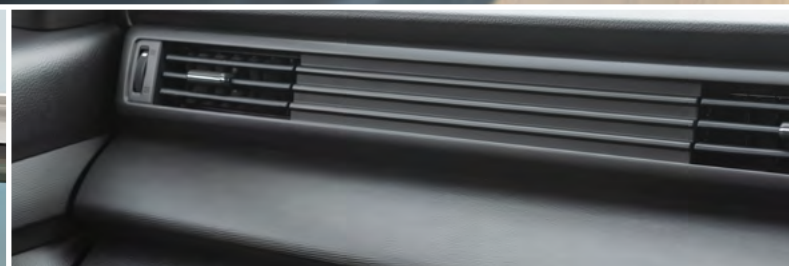


# Good times all 'round

The new Ertiga brings greater space, comfort and driving pleasure to every journey. It also offers everything you and your family need to stay entertained on the road.







## 2<sup>ND</sup> ROW AIR CONDITIONING WITH CONTROLS

The rear cabin features ceiling-mounted, three-setting, air conditioning for the comfort of all your passengers.\*

\*Available on GL models only



# SPACE FOR EVERYONE AND EVERYTHING

With its long wheelbase, high headroom, ample legroom and careful positioning of seats, the Ertiga offers more than enough space for everyone and their stuff.

The seats in the second and third rows can fold down for more space or be adjusted for more comfort. The rear luggage area offers 199 litres of space even when passengers are seated in the third row. The large tailgate opening helps with loading and unloading of luggage.

## 3<sup>RD</sup> ROW 50:50 SPLIT FOLDING

The third row allows for a 50:50 seat split making it easy to transport longer items as well as passengers.



**Invite all  
your friends**





# All-in safety

The Ertiga is equipped with a wide range of safety features to give you peace of mind whether you're transporting loved ones, friends or acquaintances.

## SRS DUAL AIRBAGS

The Ertiga comes with SRS front airbags for the driver and front passenger. When sensors detect frontal impact, the airbags inflate to help reduce the risk of injury.

## ABS WITH EBD FOR CONTROLLED BRAKING

In an emergency braking situation, the Anti-Lock Braking System keeps tyres from locking up and supports the driver to maintain steering stability. Electronic Brake Force Distribution shortens the braking distance by optimally distributing force to the front and rear wheels if there is a large load.

## KNOW YOUR SURROUNDINGS

Keep your cool with ultrasonic sensors on the rear bumper to detect obstacles while you park. Warning sounds will help keep you informed of the distance to the obstacle.

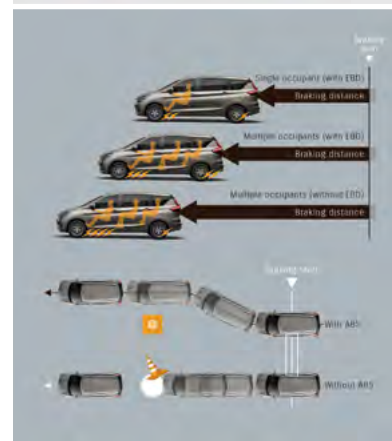
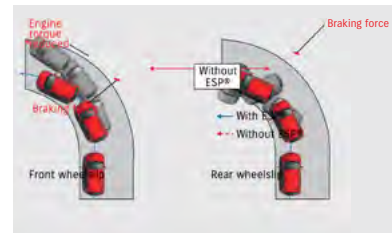
## CRUISE CONTROL

The cruise control system is tuned for effortless and efficient performance and optimum comfort on longer trips.

\*Available on GL models only

## ESP

Maintain control of your Ertiga in any driving conditions. ESP is a computer-controlled braking system which maintains traction on the road by controlling individual wheels. ESP enhances safety in slippery road conditions and during sudden, harsh and evasive steering manoeuvres.

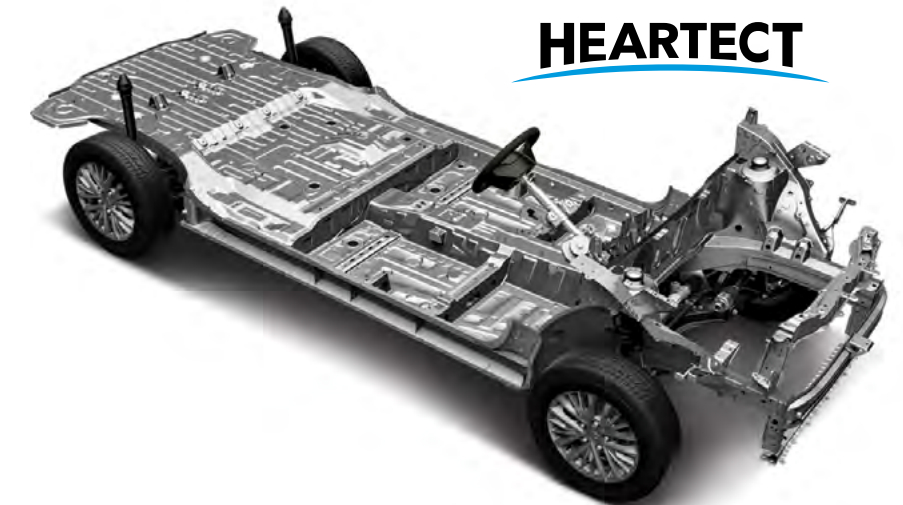


# All-in power

The Ertiga's competent 1.5-litre engine – with fuel consumption of only 6.2 litres per 100km, is one of the most fuel-efficient people-carriers in its class. Once you are on the road in the Ertiga, the responsiveness of the engine will ensure your journey is a pleasure from start to finish.

## NEW-GENERATION HEARTECT PLATFORM

The new Ertiga's light, continuous frame efficiently absorbs and disperses energy in the event of a collision. Besides greater safety, the HEARTECT frame also contributes to lower fuel consumption and higher driving performance.



**HEARTECT**

MAJOR SPECIFICATIONS

Number of doors	5-door
Engine	Petrol, 1.5ℓ
Drive system	2WD
Steering	LHD/RHD

DIMENSIONS

Overall length (mm)		4 395
Overall width (mm)		1 735
Overall height (mm)		1 690
Wheelbase (mm)		2 740
Tread	Front (mm)	1 510
	Rear (mm)	1 520
Minimum turning radius (m)		5,2
Minimum ground clearance (mm)		180

CAPACITIES

Seating capacity (persons)		7
Fuel tank capacity (litres)		45
Luggage capacity	Max volume (litres)	803
	3rd row seatback folded (VDA method) - when the luggage board is lowered down to the bottom	550
	3rd row seatback raised (VDA method) - when the luggage board is used	153

ENGINE

Type	K15B
Number of cylinders	4
Number of valves	16
Piston displacement (cm³)	1 462
Bore x stroke (mm)	74.0 x 86.0
Compression ratio	10,5
Maximum output (kW/rpm)	77/6 000
Maximum torque (Nm/rpm)	138/4 400
Fuel distribution	Multipoint injection

TRANSMISSION

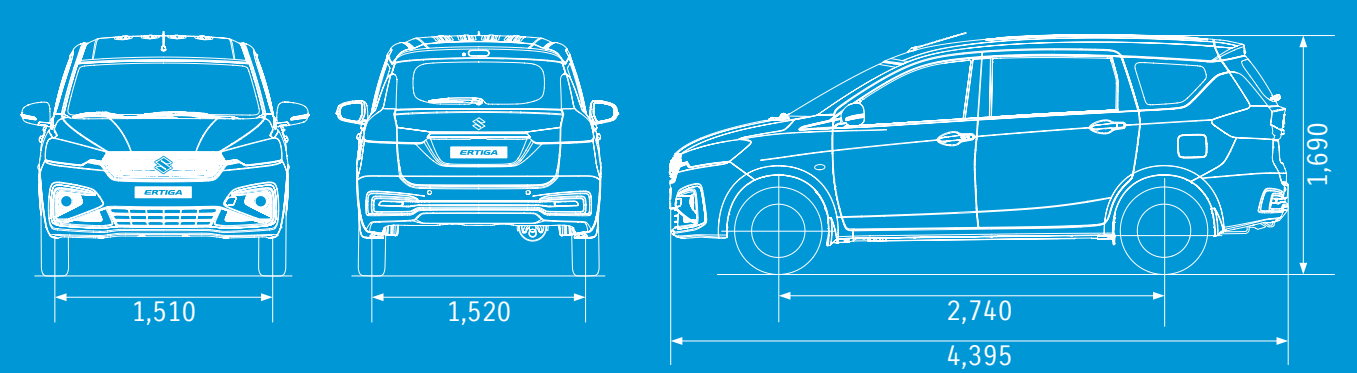
Type		5MT	4AT
Gear ratio	1 <sup>st</sup>	3 909	2 875
	2 <sup>nd</sup>	2 043	1 568
	3 <sup>rd</sup>	1 407	1 000
	4 <sup>th</sup>	1 065	0 697
	5 <sup>th</sup>	0 769	-
	6 <sup>th</sup>	-	-
Final gear ratio	Reverse	3 250	2 300
		4 353	4 375

CHASSIS

Steering	Rack & pinion	
Brakes	Front	Ventilated disc
	Rear	Drum, leading and trailing
Suspension	Front	MacPherson strut with coil spring
	Rear	Torsion beam with coil spring
Tyres	185/65R15 + alloy wheels (New Design)	

WEIGHTS

Kerb weight (min./with full option) (kg)	1130-1165
Gross vehicle weight (kg)	1720-1735





MAJOR EQUIPMENT

Transmission	5MT		4AT
Grade	GA	GL	GL

CHASSIS

Tyres and wheels	185/65R15 + steel wheels with centre cap	⌘	-	-
	185/65R15 + alloy wheels (New Design)	-	⌘	⌘
	185/65R15 + alloy wheels	-	-	-
Spare tyre and wheel	185/65R15 + steel wheel	⌘	⌘	⌘

EXTERIOR

Front grille	Chrome	-	⌘	⌘
Blacked-out pillars	B pillars	-	⌘	⌘
	C pillars	⌘	⌘	⌘
Outside door handles	Black	⌘	-	-
	Body coloured	-	⌘	⌘
	Chrome	-	-	-
Tailgate opener	Key-operated	⌘	-	-
	Handle-operated	-	⌘	⌘

VISIBILITY

Headlamps	Halogen projector and multi-reflector	⌘	⌘	⌘
Rear combination lamps	LED with light guides	⌘	⌘	⌘
Green-tinted windows		⌘	⌘	⌘
Rear window demister		-	⌘	⌘
Wipers	Front: 2 speeds (low, high) + intermittent + washer	⌘	⌘	⌘
	Rear: 1 speed + washer	-	⌘	⌘
Outside door mirrors	Black	⌘	-	-
	Body coloured	-	⌘	⌘
	Manual adjust	⌘	-	-
	Electrical adjust	-	⌘	⌘
	Electrical fold	-	⌘	⌘
	With built-in turn signal lamp	-	⌘	⌘
Day/night rearview mirror	Manual dimming	⌘	⌘	⌘

STEERING AND INSTRUMENT PANEL

3-spoke urethane steering wheel	With audio controls	-	⌘	⌘
	Tilt-adjust	⌘	⌘	⌘
	Urethane	⌘	⌘	⌘
	With cruise control	-	⌘	⌘
Power steering		⌘	⌘	⌘
Tachometer		⌘	⌘	⌘
Information display	Segment display	⌘	⌘	⌘
	Clock	⌘	⌘	⌘
	Fuel consumption (instantaneous/average)	⌘	⌘	⌘
	Driving range	⌘	⌘	⌘
Light-off and key reminder		⌘	⌘	⌘
Driver's seatbelt reminder	Lamp & alarm	⌘	⌘	⌘
Door ajar reminder		⌘	⌘	⌘
Low fuel warning		⌘	⌘	⌘
Instrument panel ornament	Black horizontal pattern	⌘	⌘	⌘
Passenger's seatbelt reminder	Lamp & Alarm	⌘	⌘	⌘

DRIVING AMENITIES

Electric windows	Front & Rear	⌘	⌘	⌘
Electric window (Driver's Seat)	Automatic rise	-	⌘	⌘
	Auto down	⌘	⌘	⌘
Central door locking	Switch on driver's side	⌘	⌘	⌘
Remote-control door locks	With hazard lamp answerback function	-	⌘	⌘
Pollen filter		⌘	⌘	⌘
Audio	Antenna (mounted at front of roof)	⌘	⌘	⌘
	Front speakers x 2	-	⌘	⌘
	Rear speakers x 2	-	⌘	⌘
	7" touchscreen infotainment system with smart-phone connectivity and reverse camera	-	⌘	⌘
Cruise Control		-	⌘	⌘



Transmission	5MT		4AT
Grade	GA	GL	GL

INTERIOR

Cabin lights	Front cabin light (3-position)	⚙	⚙	⚙
	Centre cabin light (3-position)	⚙	⚙	⚙
Sun visors	Driver's and passenger's sides	⚙	⚙	⚙
	- with ticket holder (driver's side)	⚙	⚙	⚙
	- with vanity mirror (passenger's side)	-	⚙	⚙
Assist grips	Passenger's side	⚙	⚙	⚙
	2nd-row x 2	⚙	⚙	⚙
	3rd-row x 2	⚙	⚙	⚙
Cup holders	Front x 2	⚙	⚙	⚙
	Ventilated cup holders	⚙	⚙	⚙
Bottle holders	Front x 2	⚙	⚙	⚙
	2nd-row x 2	⚙	⚙	⚙
	3rd-row x 2	⚙	⚙	⚙
Console box with armrest		-	⚙	⚙
Shift knob	Black without ornament	⚙	-	-
	Black with chrome accent	-	⚙	-
	Black with satin chrome	-	-	⚙
Parking brake release button	Black	⚙	-	-
	Chrome	-	⚙	⚙
USB port and AUX input	Centre console	-	⚙	⚙
12V accessory socket	Instrument panel x 1	⚙	⚙	⚙
	2nd-row x 1	-	⚙	⚙
Foot rest	Driver's side	⚙	⚙	⚙
Remote fuel lid opener		⚙	⚙	⚙
Inside door handles	Black	⚙	-	-
	Chrome	-	⚙	⚙

SEATS

Front seats	Seat height adjuster (driver's side)	-	⚙	⚙
	Slide and recline function (both sides)	⚙	⚙	⚙
	Head restraint x 2 (separate type)	⚙	⚙	⚙

SEATS (CONTINUED)

Front seats (Cont.)	Seatback pocket (driver's side)	-	⚙	⚙
	Seatback pocket (passenger's side)	-	⚙	⚙
2nd-row seats	Head restraint x 2 (separate type)	⚙	⚙	⚙
	Slide and recline function	⚙	⚙	⚙
	60:40-split single-folding	⚙	⚙	⚙
2nd-row centre armrest		-	⚙	⚙
3rd-row seats	Head restraint x 2 (separate type)	⚙	⚙	⚙
	50:50-split tilt down-folding	⚙	⚙	⚙
Seat upholstery material	Fabric for GA	⚙	-	-
	Fabric for GL	-	⚙	⚙

LUGGAGE AREA

Luggage board	50:50-split	-	⚙	⚙
---------------	-------------	---	---	---

SAFETY, SECURITY, AND ENVIRONMENTAL COMPATIBILITY

SRS front dual airbags		⚙	⚙	⚙
Seatbelts	Front row: 3-point ELR seatbelts with pretensioners and force limiters	⚙	⚙	⚙
	- With height adjusters	-	⚙	⚙
	2nd row: 3-point ELR seatbelts x 2 with centre 2-point lapbelt	⚙	⚙	⚙
	3rd row: 3-point ELR seatbelts x 2	⚙	⚙	⚙
ISOFIX child seat anchorages	x2	⚙	⚙	⚙
Child seat tether anchorages	x2	⚙	⚙	⚙
Childproof rear door locks		⚙	⚙	⚙
Side impact door beams		⚙	⚙	⚙
ABS with EBD function		⚙	⚙	⚙
AT shift lock/key interlock		-	-	⚙
High-mount stop lamp	LED	⚙	⚙	⚙
Immobiliser		⚙	⚙	⚙
Rear Parking Sensors	4 Sensors	⚙	⚙	⚙
Security alarm		-	⚙	⚙
ESP®**		⚙	⚙	⚙
Hill hold control		-	-	⚙

⚙ : Standard    - : Not Available

\*Bluetooth is a registered trademark of Bluetooth SIG, Inc.





**Go far  
Go together**



# Go big Go in style

Enhance your comfort and style even further with a wide selection of extras.



## EXTERIOR STYLING KIT

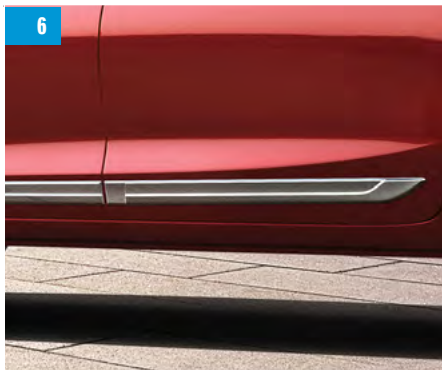
Images of the front, side and rear under body spoiler are part of exterior styling kit.

### COLOURS AVAILABLE:

- Auburn red pearl metallic.  
Part No. 990J0M72R07-050
- Magma grey metallic.  
Part No. 990J0M72R07-030
- Silky silver metallic.  
Part No. 990J0M72R07-020
- Oxford blue pearl metallic.  
Part No. 990J0M72R07-040
- Arctic white pearl.  
Part No. 990J0M72R07-010
- Dignity brown.  
Part No. 990J0M72R07-300
- Splendid silver.  
Part No. 990J0M72R07-230

- 1 | Front under body spoiler \*
- 2 | Side under body spoiler \*
- 3 | Rear under body spoiler \*

\*Available in colours mentioned



## EXTERIOR ACCESSORIES

- 4 | **Roof edge spoiler**  
Arctic white pearl.  
Part No. 990J0M72R07-130  
Silky silver metallic.  
Part No. 990J0M72R07-140  
Magma grey metallic.  
Part No. 990J0M72R07-150  
Oxford blue pearl metallic.  
Part No. 990J0M72R07-160  
Auburn red pearl metallic.  
Part No. 990J0M72R07-170  
Dignity brown.  
Part No. 990J0M72R07-290  
Splendid silver.  
Part No. 990J0M72R07-220
- 5 | **Alloy wheel**  
Midnight black.  
Part No. 43210M72R50-QC8  
Silver.  
Part No. 43210M72R50-27N
- 6 | **Body side molding garnish finish**  
Part No. 990J0M72R01-020
- 7 | **Body side molding garnish insert**  
Consist of coloured and chrome part.  
Midnight black pearl.  
Part No. 90J0M72R01-010  
Arctic white pearl.  
Part No. 990J0M72R01-030  
Silky silver metallic.  
Part No. 990J0M72R01-040  
Magma grey metallic.  
Part No. 990J0M72R01-050  
Oxford blue pearl metallic.  
Part No. 990J0M72R01-060  
Auburn red pearl metallic.  
Part No. 990J0M72R01-070  
Dignity brown.  
Part No. 990J0M72R01-090  
Splendid silver  
Part No. 990J0M72R01-080
- 8 | **Door visor**  
Part No. 990J0M72RQ0-010
- 9 | **Mud flaps** (no image available)  
Part No. 990J0M72R00-010
- 10 | **Tow bar** (no image available)  
Part No. 72901-72R00-000



# INTERIOR ACCESSORIES

- 1 | Door sill guard  
Twin colour.  
Part No. 990J0M72RP6-010
- 2 | Rubber mat  
Part No. 75901M72RB0-RHD





# All-in style

The new Ertiga comes in six stylish shades to complement the vehicle’s aerodynamic profile.



Premium Oxford Blue (ZYA)



Metallic Magma Grey (Z7Q)



Pearl Arctic White (ZHJ)



Dignity Brown (ZQK)



Splendid Silver (WBE)

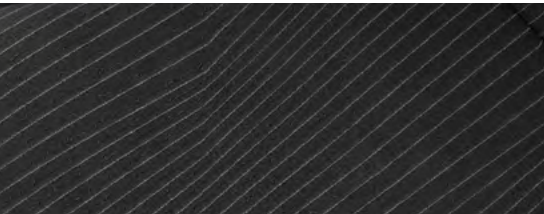


Pearl Midnight Black (ZAM)



Premium Auburn Red (ZYY)

## SEAT UPHOLSTERY



GL and GA interior

## WHEELS



15-inch steel wheel with wheel cover



15-inch alloy wheels



## SUZUKI COMPLETE

Suzuki understands that purchasing a new vehicle is a substantial investment. Our unwavering commitment to customer satisfaction is represented in our ‘Suzuki Complete’ package, which includes every aspect of after-sales support, with warranty, service plan, and roadside assistance standard.

### Warranty

All Suzuki models are covered by a promotional comprehensive manufacturer’s warranty against any defects for a period of 5-year/200 000km. This is supported by a six-year body corrosion warranty subject to terms and conditions. The comprehensive manufacturer’s warranty is strictly reserved to new passenger cars purchased at Suzuki dealerships nationwide.

### Service Plan

The Suzuki Ertiga benefits from a 4-year/60 000km service plan. This plan includes the replacement of oil, the oil filter, fuel filter, brake fluid, air filter and accessory belts, but excludes tyres, brakes and other wear-and-tear items.

### Service Intervals

15 000km or one year, whichever comes first.

### Roadside Assistance

Every new Ertiga comes with a roadside assistance plan. Some of the benefits offered by this comprehensive package include: battery and locksmith call-out services, mechanical and electrical, breakdown towing (accident towing is optional), emergency medical rescue, vehicle repatriation and a stand-by-you roadside security armed-response service.



All care is taken to ensure the accuracy of this brochure at the time of print approval. Specifications, features, prices and model availability may vary from those specified and may change without notice. Always consult your authorised Suzuki Dealer or refer to [www.SuzukiAuto.co.za](http://www.SuzukiAuto.co.za) for the latest details on all models. SUZUKI AUTO South Africa (PTY) Ltd will not be held liable for any loss as a result of reliance on the content of this brochure, whether in negligence or otherwise. Vehicles are shown for illustrative purposes only and may not depict exact specifications. Published July 2022.

**Part number 9900L-72R02-NEW**



SUZUKI AUTO SOUTH AFRICA (PTY) LTD | Tel: 0861 511 111  
No.52 Saturn Crescent, Linbro Business Park, Frankenwald, Marlboro, Sandton  
[www.SuzukiAuto.co.za](http://www.SuzukiAuto.co.za)

